

压板 · 附软质面, 类似于DIN 6314  
EH 23190.



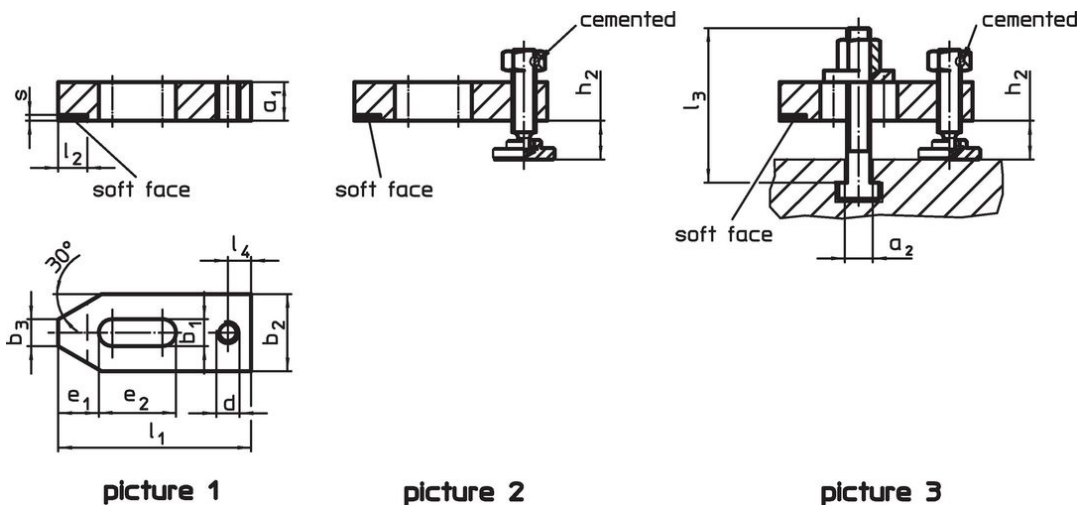
产品描述

This clamp (clamping claw) according to DIN 6314 with soft face is mainly used in mechanical clamping technology for clamping workpieces.  
铜板可保护工件免于损坏。固夹螺栓上螺帽 DIN 6330 B (EH 2307.) / 锥形座 DIN 6319 G (EH 2305.) 与调整螺丝上推力垫 DIN 6311 (EH 2256. 可拆式) 的组合, 可弥补平行性的不足。固定夹可应用于任何一种方式 (软质或硬质固夹面)。

材质

- 软面  
• 铜, 铜焊
- 钳  
• 热处理钢, 染黑

图面

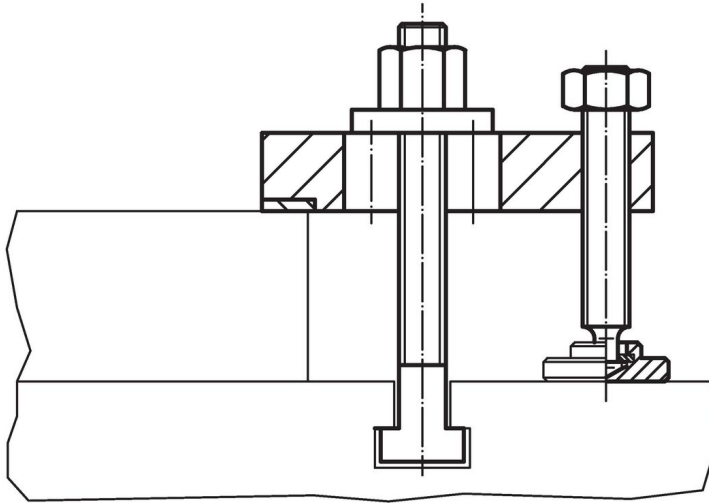


订单信息

标称 不清。 b <sub>1</sub>	尺寸												T槽尺寸	夹持高度		品号	
	a <sub>1</sub>	l <sub>3</sub>	a <sub>2</sub>	b <sub>2</sub>	b <sub>3</sub>	d	e <sub>1</sub>	e <sub>2</sub>	l <sub>1</sub>	l <sub>2</sub> ±1	l <sub>4</sub>	s		h <sub>2</sub> min	h <sub>2</sub> max.		[g]
[mm]	[mm]												[mm]	[mm]		[g]	
<b>不含零件 – 相片 1</b>																	
9	12	-	-	25	10	M 8	13	22	60	10	8	2	-	-	-	111	<a href="#">23190.0010</a>
11	15	-	-	30	12	M10	15	30	80	12	10	2	-	-	-	221	<a href="#">23190.0020</a>
14	20	-	-	40	14	M12	21	40	100	15	12	3-0,5	-	-	-	478	<a href="#">23190.0030</a>
18	25	-	-	50	18	M16	26	45	125	20	16	3-0,5	-	-	-	949	<a href="#">23190.0040</a>
<b>只有调整螺丝 – 相片 2</b>																	
9	12	-	-	25	10	M 8	13	22	60	10	8	2	-	8	23	150	<a href="#">23190.0011</a>
9	12	-	-	25	10	M 8	13	22	60	10	8	2	-	8	43	160	<a href="#">23190.0012</a>
11	15	-	-	30	12	M10	15	30	80	12	10	2	-	10	38	295	<a href="#">23190.0021</a>
11	15	-	-	30	12	M10	15	30	80	12	10	2	-	10	58	310	<a href="#">23190.0022</a>
14	20	-	-	40	14	M12	21	40	100	15	12	3-0,5	-	10	31	590	<a href="#">23190.0031</a>
14	20	-	-	40	14	M12	21	40	100	15	12	3-0,5	-	10	71	620	<a href="#">23190.0032</a>
18	25	-	-	50	18	M16	26	45	125	20	16	3-0,5	-	12	42	1150	<a href="#">23190.0041</a>
18	25	-	-	50	18	M16	26	45	125	20	16	3-0,5	-	12	87	1220	<a href="#">23190.0042</a>
<b>含调整螺丝 和夹持螺栓 – 相片 3</b>																	
9	12	50	7,6	25	10	M 8	13	22	60	10	8	2	8	8	16	200	<a href="#">23190.0015</a>
9	12	80	7,6	25	10	M 8	13	22	60	10	8	2	8	8	43	220	<a href="#">23190.0016</a>
11	15	65	9,6	30	12	M10	15	30	80	12	10	2	10	10	22	385	<a href="#">23190.0025</a>
11	15	100	9,6	30	12	M10	15	30	80	12	10	2	10	10	58	420	<a href="#">23190.0026</a>
14	20	80	11,6	40	14	M12	21	40	100	15	12	3-0,5	12	10	28	740	<a href="#">23190.0035</a>
14	20	125	11,6	40	14	M12	21	40	100	15	12	3-0,5	12	10	71	805	<a href="#">23190.0036</a>
14	20	80	13,6	40	14	M12	21	40	100	15	12	3-0,5	14	10	26	755	<a href="#">23190.0037</a>

标称 不清。 b <sub>1</sub> [mm]	尺寸 [mm]												T槽尺寸 [mm]	夹持高度 [mm]		重量 [g]	品号
	a <sub>1</sub>	l <sub>3</sub>	a <sub>2</sub>	b <sub>2</sub>	b <sub>3</sub>	d	e <sub>1</sub>	e <sub>2</sub>	l <sub>1</sub>	l <sub>2</sub> ±1	l <sub>4</sub>	s		h <sub>2</sub> min	h <sub>2</sub> max.		
14	20	125	13,6	40	14	M12	21	40	100	15	12	3-0,5	14	10	71	820	<a href="#">23190.0038</a>
18	25	100	15,6	50	18	M16	26	45	125	20	16	3-0,5	16	12	31	1470	<a href="#">23190.0045</a>
18	25	160	15,6	50	18	M16	26	45	125	20	16	3-0,5	16	12	87	1630	<a href="#">23190.0046</a>
18	25	100	17,6	50	18	M16	26	45	125	20	16	3-0,5	18	12	32	1490	<a href="#">23190.0047</a>
18	25	160	17,6	50	18	M16	26	45	125	20	16	3-0,5	18	12	87	1650	<a href="#">23190.0048</a>

### 应用范例



### 遵守

For detailed compliance information please select the desired article number.