

承座销 · 销型

EH 22680.



产品描述

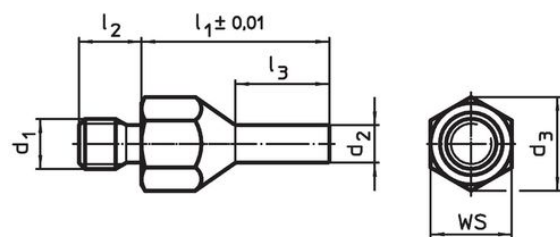
适合作为实心且精密的底座组件及止动组件，而梢状型式的此种定位梢，可应用于定位点窄小的组件中。

表面感应硬化和地面

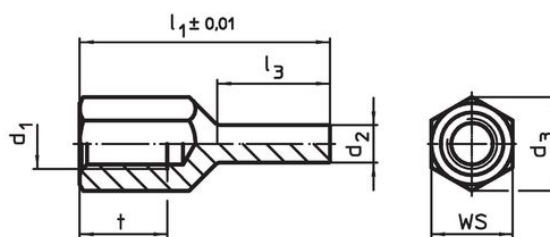
材质

- 钢，热处理， 染黑

图面




picture 1



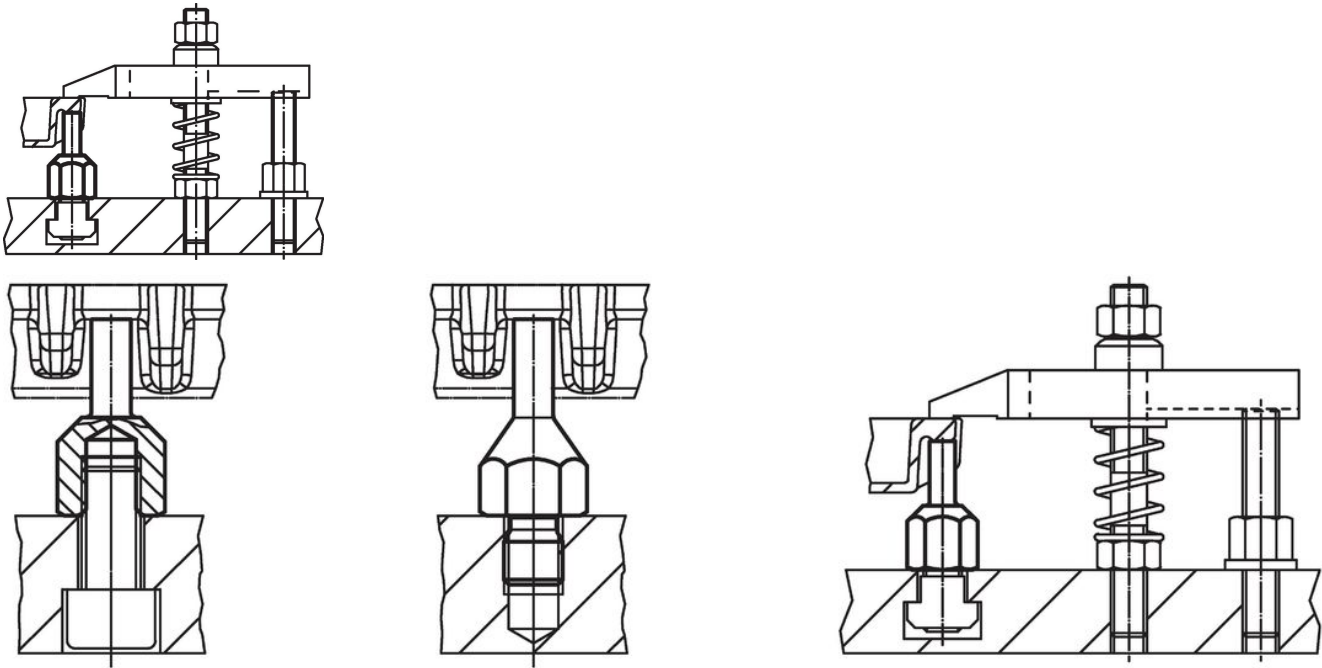
picture 2

订单信息

l ₁ ±0,01	d ₁	d ₂	尺寸				t	d ₃	WS [mm]	起动 扭力 max. [Nm]	[g]	品号
			l ₂	l ₃	[mm]							
有公牙 – 相片 1												
20	M 6	4	8	10,0	–	11,0	10	7	7,7	22680.0402		
30	M 6	4	8	15,0	–	11,0	10	7	12,0	22680.0404		
30	M 8	4	10	15,0	–	14,4	13	18	17,0	22680.0412		
40	M 8	4	10	20,0	–	14,4	13	18	23,0	22680.0414		
30	M 8	6	10	15,0	–	14,4	13	18	20,0	22680.0416		
40	M 8	6	10	20,0	–	14,4	13	18	30,0	22680.0418		
30	M10	6	14	15,0	–	19,0	17	32	30,0	22680.0422		
50	M10	6	14	25,0	–	19,0	17	32	51,0	22680.0424		
30	M10	8	14	15,0	–	19,0	17	32	35,0	22680.0426		
50	M10	8	14	25,0	–	19,0	17	32	58,0	22680.0428		
40	M12	6	14	20,0	–	21,2	19	60	48,0	22680.0432		
60	M12	6	14	30,0	–	21,2	19	60	75,0	22680.0434		
40	M12	8	14	20,0	–	21,2	19	60	56,0	22680.0436		
60	M12	8	14	30,0	–	21,2	19	60	83,0	22680.0438		
有母牙 – 相片 2												
20	M 6	4	–	8,5	6	11,0	10	7	5,7	22680.0452		
30	M 6	4	–	13,5	9	11,0	10	7	8,9	22680.0454		
30	M 8	4	–	13,0	10	14,4	13	18	13,0	22680.0462		
40	M 8	4	–	18,0	14	14,4	13	18	18,0	22680.0464		
30	M 8	6	–	13,0	10	14,4	13	18	16,0	22680.0466		
40	M 8	6	–	18,0	14	14,4	13	18	21,0	22680.0468		
30	M10	6	–	12,0	10	19,0	17	32	24,0	22680.0472		
50	M10	6	–	25,0	15	19,0	17	32	38,0	22680.0474		
30	M10	8	–	12,0	10	19,0	17	32	28,0	22680.0476		
50	M10	8	–	25,0	15	19,0	17	32	44,0	22680.0478		

l ₁ ±0,01	d ₁	d ₂	尺寸				WS [mm]	起动 扭力 max. [Nm]	 [g]	品号
			l ₂	l ₃	t	d ₃				
40	M12	6	–	18,0	12	21,2	19	60	36,0	22680.0482
60	M12	6	–	28,0	18	21,2	19	60	56,0	22680.0484
40	M12	8	–	18,0	12	21,2	19	60	41,0	22680.0486
60	M12	8	–	28,0	18	21,2	19	60	63,0	22680.0488

应用范例



遵守

符合 RoHS

符合指令 2011/65/EU 和指令 2015/863

不含 SVHC 物质

不含超过 0.1% w/w 的 SVHC 物质 - 截至 2024 年 1 月 23 日的 SVHC 清单。

不含 65 号提案物质

不包括 65 号提案物质

<https://www.P65Warnings.ca.gov/>

不含冲突矿物

„本产品不含来自刚果民主共和国或邻近国家的任何被指定为“冲突矿物”的物质，例如钽、锡、金或钨。