

## 承座销 · 肋纹或尖头

EH 22680.



### 产品描述

适用于有粗糙表面的工件。尖头形状特别适用于铸造零件。

### 材质

#### 入子

- 硬金属，有肋纹
- 硬金属，有尖点

#### 本体

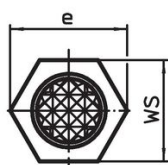
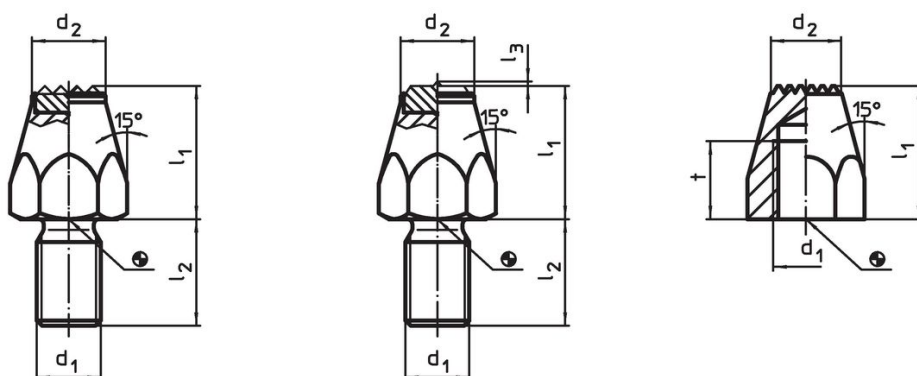
- 钢，热处理，染黑
- 切削钢，表面硬化，染黑

### 更多信息

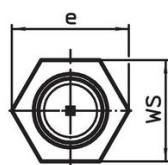
#### 更多产品

- 插销

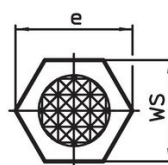
### 图面



picture 1



picture 2



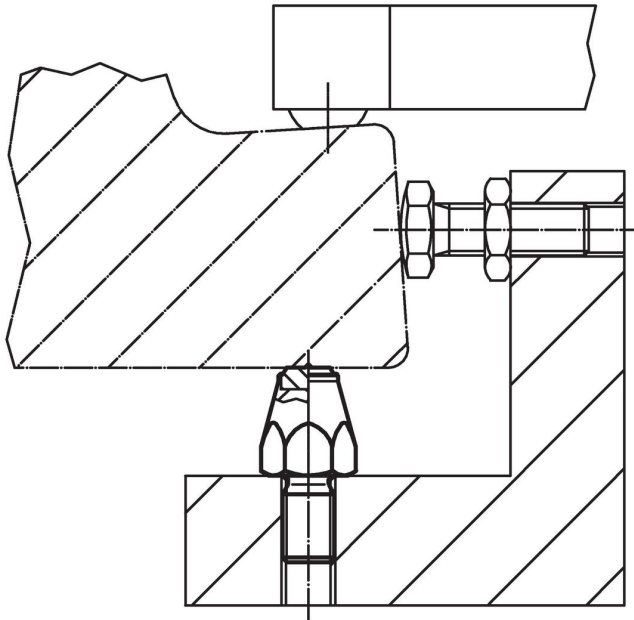
picture 3

### 订单信息

尺寸		WS	起动 扭力 max. [Nm]	[g]	品号					
$l_1$	$d_1$					$l_2$	$l_3$	$t$	$d_2$	$e$
[mm]							[mm]	[Nm]	[g]	
有硬金属入子，有肋纹，和有牙的柄 – 相片 1										
10	M 6	11	–	–	9,5	11,5	10	7	8,8	22680.0061
15	M 8	13	–	–	12,5	15,0	13	18	22,0	22680.0081
20	M10	15	–	–	12,5	19,6	17	32	39,0	22680.0101
25	M12	20	–	–	13,8	21,9	19	60	64,0	22680.0121
有硬金属入子，有尖点，和有牙的柄 – 相片 2										
10	M 6	11	0,8	–	9,5	11,5	10	7	9,1	22680.0063
15	M 8	13	0,8	–	12,5	15,0	13	18	22,0	22680.0083
20	M10	15	0,8	–	12,5	19,6	17	32	40,0	22680.0103
25	M12	20	0,8	–	13,8	21,9	19	60	65,0	22680.0123
表面硬化，有肋纹，有母螺纹 – 相片 3										
20	M 8	–	–	10	9,0	15,0	13	18	14,0	22680.0142
25	M 8	–	–	10	9,0	15,0	13	18	20,0	22680.0144
25	M10	–	–	13	12,5	19,6	17	32	31,0	22680.0164
30	M10	–	–	13	12,5	19,6	17	32	40,0	22680.0166

l <sub>1</sub>	d <sub>1</sub>	l <sub>2</sub>	尺寸				WS	起动力矩 max.	📦 [g]	品号
			l <sub>3</sub>	t	d <sub>2</sub>	e				
			[mm]				[mm]	[Nm]		
40	M10	-	-	13	12,5	19,6	17	32	60,0	<a href="#">22680.0168</a>
25	M12	-	-	15	13,0	21,9	19	60	33,0	<a href="#">22680.0184</a>
30	M12	-	-	15	13,0	21,9	19	60	44,0	<a href="#">22680.0186</a>
40	M12	-	-	15	13,0	21,9	19	60	69,0	<a href="#">22680.0188</a>

### 应用范例



### 遵守

For detailed compliance information please select the desired article number.