

分割定位柱 · 带拉环 EH 22120.



产品描述

分割定位目的。

材质

本体

- 钢, 染黑
- 不锈钢 1.4305

固定梢子

- 不锈钢 1.4305, 镀镍

拉环

- 不锈钢 1.4310

组装

锁紧螺母必须单独购买。

操作

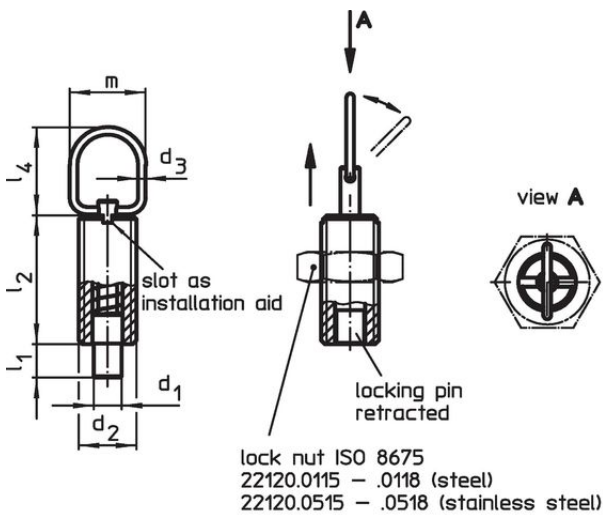
当使用带锁附机构的型号时, 在缩回锁销后, 将拉环旋转 90°, 然后用带槽口固定拉环 (锁销不应突出)。

更多信息

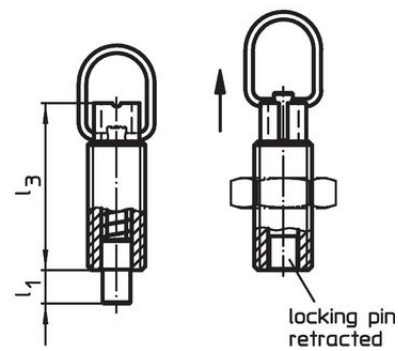
更多产品

- 支持座, 用于分割螺栓和分割定位柱, 压铸
- 定位衬套, 适用于分割螺栓和分割定位柱
- 距离调整环, 适用于分割定位柱
- 支持座, 适用于分割螺栓和分割定位柱

图面



picture 1



with locking

picture 2

订单信息





| d ₁ -0,05 -0,1 | d ₂ | d ₃ | 尺寸 | | | | | 行程 s [mm] | 弹簧荷重 ¹⁾ | | max. [°C] | [g] | 品号 |
|---------------------------------|----------------|----------------|-------------------------------|----------------|----------------|----------------|----|-----------------|----------------------------|----------------------------|--------------|-----|------------|
| | | | l ₁ min [mm] | l ₂ | l ₃ | l ₄ | m | | F ₁ ~ [N] | F ₂ ~ [N] | | | |
| 不含锁紧 - 相片 1, 钢 | | | | | | | | | | | | | |
| 5 | M10 | 1,5 | 5 | 22 | 28 | 23 | 18 | 5 | 5 | 15 | 250 | 11 | 22120.1310 |
| 5 | M10 x 1 | 1,5 | 5 | 22 | 28 | 23 | 18 | 5 | 5 | 15 | 250 | 12 | 22120.1312 |
| 6 | M12 | 2,0 | 6 | 24 | 31 | 25 | 22 | 6 | 6 | 21 | 250 | 18 | 22120.1314 |
| 6 | M12 x 1,5 | 2,0 | 6 | 24 | 31 | 25 | 22 | 6 | 6 | 21 | 250 | 18 | 22120.1316 |
| 8 | M16 | 2,0 | 9 | 34 | 44 | 25 | 22 | 9 | 7 | 27 | 250 | 43 | 22120.1318 |
| 8 | M16 x 1,5 | 2,0 | 9 | 34 | 44 | 25 | 22 | 9 | 7 | 27 | 250 | 45 | 22120.1320 |
| 10 | M16 | 2,0 | 9 | 34 | 44 | 25 | 22 | 9 | 7 | 27 | 250 | 45 | 22120.1322 |
| 10 | M16 x 1,5 | 2,0 | 9 | 34 | 44 | 25 | 22 | 9 | 7 | 27 | 250 | 47 | 22120.1324 |

¹⁾ 统计平均值

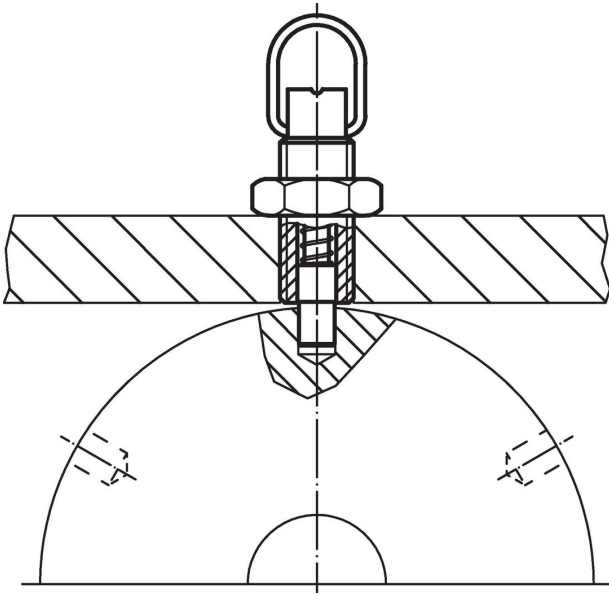
| d ₁ -0,05 -0,1 | d ₂ | d ₃ | 尺寸 | | | | | 行程 s [mm] | 弹簧荷重 ¹⁾ | | max. [°C] |  [g] | 品号 |
|---------------------------------|----------------|----------------|-------------------------------|----------------|----------------|----------------|----|-----------------|----------------------------|----------------------------|--------------|--|------------|
| | | | l ₁ min [mm] | l ₂ | l ₃ | l ₄ | m | | F ₁ ~ [N] | F ₂ ~ [N] | | | |
| 不含锁紧 – 相片 1, 不锈钢 | | | | | | | | | | | | | |
| 5 | M10 | 1,5 | 5 | 22 | 28 | 23 | 18 | 5 | 5 | 15 | 250 | 11 | 22120.1410 |
| 5 | M10 x 1 | 1,5 | 5 | 22 | 28 | 23 | 18 | 5 | 5 | 15 | 250 | 12 | 22120.1412 |
| 6 | M12 | 2,0 | 6 | 24 | 31 | 25 | 22 | 6 | 6 | 21 | 250 | 18 | 22120.1414 |
| 6 | M12 x 1,5 | 2,0 | 6 | 24 | 31 | 25 | 22 | 6 | 6 | 21 | 250 | 18 | 22120.1416 |
| 8 | M16 | 2,0 | 9 | 34 | 44 | 25 | 22 | 9 | 7 | 27 | 250 | 43 | 22120.1418 |
| 8 | M16 x 1,5 | 2,0 | 9 | 34 | 44 | 25 | 22 | 9 | 7 | 27 | 250 | 45 | 22120.1420 |
| 10 | M16 | 2,0 | 9 | 34 | 44 | 25 | 22 | 9 | 7 | 27 | 250 | 45 | 22120.1422 |
| 10 | M16 x 1,5 | 2,0 | 9 | 34 | 44 | 25 | 22 | 9 | 7 | 27 | 250 | 47 | 22120.1424 |
| 含锁紧 – 相片 2, 钢 | | | | | | | | | | | | | |
| 5 | M10 | 1,5 | 5 | 22 | 28 | 23 | 18 | 5 | 5 | 15 | 250 | 12 | 22120.1340 |
| 5 | M10 x 1 | 1,5 | 5 | 22 | 28 | 23 | 18 | 5 | 5 | 15 | 250 | 13 | 22120.1342 |
| 6 | M12 | 2,0 | 6 | 24 | 31 | 25 | 22 | 6 | 6 | 21 | 250 | 19 | 22120.1344 |
| 6 | M12 x 1,5 | 2,0 | 6 | 24 | 31 | 25 | 22 | 6 | 6 | 21 | 250 | 20 | 22120.1346 |
| 8 | M16 | 2,0 | 9 | 34 | 44 | 25 | 22 | 9 | 7 | 27 | 250 | 48 | 22120.1348 |
| 8 | M16 x 1,5 | 2,0 | 9 | 34 | 44 | 25 | 22 | 9 | 7 | 27 | 250 | 51 | 22120.1350 |
| 10 | M16 | 2,0 | 9 | 34 | 44 | 25 | 22 | 9 | 7 | 27 | 250 | 50 | 22120.1352 |
| 10 | M16 x 1,5 | 2,0 | 9 | 34 | 44 | 25 | 22 | 9 | 7 | 27 | 250 | 53 | 22120.1354 |
| 含锁紧 – 相片 2, 不锈钢 | | | | | | | | | | | | | |
| 5 | M10 | 1,5 | 5 | 22 | 28 | 23 | 18 | 5 | 5 | 15 | 250 | 12 | 22120.1440 |
| 5 | M10 x 1 | 1,5 | 5 | 22 | 28 | 23 | 18 | 5 | 5 | 15 | 250 | 13 | 22120.1442 |
| 6 | M12 | 2,0 | 6 | 24 | 31 | 25 | 22 | 6 | 6 | 21 | 250 | 19 | 22120.1444 |
| 6 | M12 x 1,5 | 2,0 | 6 | 24 | 31 | 25 | 22 | 6 | 6 | 21 | 250 | 20 | 22120.1446 |
| 8 | M16 | 2,0 | 9 | 34 | 44 | 25 | 22 | 9 | 7 | 27 | 250 | 48 | 22120.1448 |
| 8 | M16 x 1,5 | 2,0 | 9 | 34 | 44 | 25 | 22 | 9 | 7 | 27 | 250 | 51 | 22120.1450 |
| 10 | M16 | 2,0 | 9 | 34 | 44 | 25 | 22 | 9 | 7 | 27 | 250 | 50 | 22120.1452 |
| 10 | M16 x 1,5 | 2,0 | 9 | 34 | 44 | 25 | 22 | 9 | 7 | 27 | 250 | 53 | 22120.1454 |

¹⁾ 统计平均值

配件

|  | 尺寸 | 扳手尺寸 [mm] |  [g] | 品号 |
|---|------------------------|--------------|--|------------|
| | d ₂ [mm] | | | |
| Lock nuts ISO 4035, 钢 | | | | |
|  | M10 | 16 | 5,3 | 22120.0706 |
| | M12 | 18 | 7,6 | 22120.0708 |
| | M16 | 24 | 18,0 | 22120.0710 |
| Lock nuts ISO 4035, 不锈钢 | | | | |
|  | M10 | 16 | 5,3 | 22120.0716 |
| | M12 | 18 | 7,6 | 22120.0718 |
| | M16 | 24 | 18,0 | 22120.0720 |
| Lock nuts ISO 8675 (DIN 439), 钢 | | | | |
|  | M10 x 1 | 16 | 5,2 | 22120.0115 |
| | M12 x 1,5 | 18 | 7,5 | 22120.0116 |
| | M16 x 1,5 | 24 | 15,0 | 22120.0118 |
| Lock nuts ISO 8675 (DIN 439), 不锈钢 | | | | |
|  | M10 x 1 | 16 | 5,2 | 22120.0515 |
| | M12 x 1,5 | 18 | 7,5 | 22120.0516 |
| | M16 x 1,5 | 24 | 15,0 | 22120.0518 |

应用范例



遵守

For detailed compliance information please select the desired article number.