

定位柱 · 有球，有头  
EH 22050.



产品描述

适用于定位、供压或顶举。  
由头部精确的深凿

材质

本体  
• 切削钢， 染黑  
• 不锈钢 1.4305

珠子

• 轴承钢， 硬化  
• 不锈钢， 硬化

弹簧

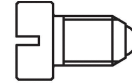
• 不锈钢

组装

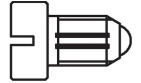
用于 M4 / M5 参照尺寸  $l_3$ 。

特性

标准弹簧荷重: 无标示  
强化弹簧荷重: 以两条线标示



Standard spring load



Heavy spring load

更多信息

注意事项

特殊的样式欢迎洽询。  
定位柱经过特别测试，以得知其弹簧的范围和作用。

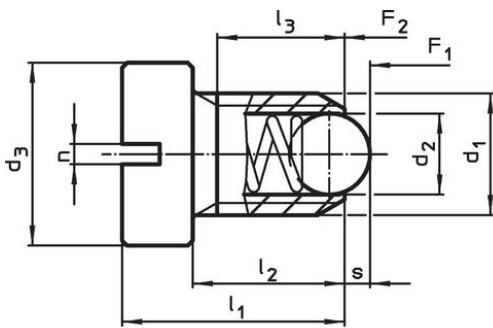
参考

需求的螺纹锁，请参阅附录 - 技术数据 - 索引阻力的计算，细节请参考本章节的起始。

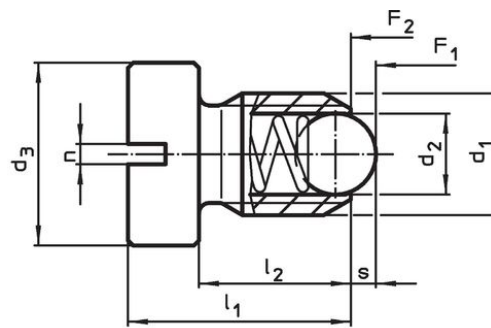
更多产品

- Locators, with bore hole, for spring plungers
- Locators, smooth, for spring plungers

图面



Size M4+M5



Size M6-M12

订单信息

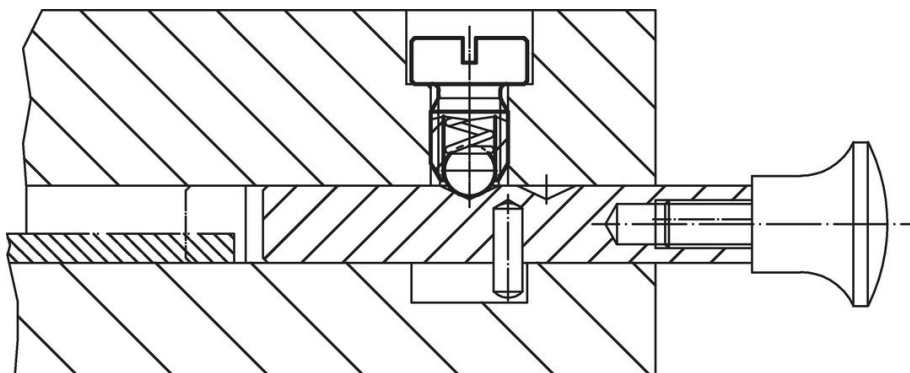
d <sub>1</sub>	d <sub>2</sub>	d <sub>3</sub>	尺寸				n	行程 s [mm]	弹簧荷重 <sup>1)</sup>		max. [°C]	[g]	品号
			l <sub>1</sub>	l <sub>2</sub>	l <sub>3</sub> min	[mm]			F <sub>1</sub> ~	F <sub>2</sub> ~			
切削钢，标准弹簧荷重													
M 4	2,5	6	9,5	6,5	5,0	0,6	0,8	8,0	14,0	250	1,0	22050.0930	
M 5	3,0	8	12,5	8,5	6,7	0,8	0,9	8,0	14,0	250	2,2	22050.0931	
M 6	3,5	10	14,0	9,0	-	1,0	1,0	11,0	18,0	250	3,7	22050.0932	
M 8	4,5	13	16,5	11,0	-	1,2	1,5	18,0	31,0	250	7,4	22050.0933	
M10	6,0	16	20,0	14,0	-	1,5	2,0	24,0	45,0	250	13,0	22050.0934	
M12	8,0	18	22,0	15,0	-	2,0	2,5	26,0	49,0	250	19,0	22050.0935	

<sup>1)</sup> 统计平均值

d <sub>1</sub>	d <sub>2</sub>	d <sub>3</sub>	尺寸				n	行程 s [mm]	弹簧荷重 <sup>1)</sup>		max. [°C]	[g]	品号
			l <sub>1</sub> [mm]	l <sub>2</sub>	l <sub>3</sub> min	F <sub>1</sub> ~ [N]			F <sub>2</sub> ~ [N]				
<b>切削钢，增强 弹簧荷重</b>													
M 4	2,5	6	9,5	6,5	5,0	0,6	0,8	12,0	18,0	250	0,9	22050.1040	
M 5	3,0	8	12,5	8,5	6,7	0,8	0,9	15,0	22,0	250	2,2	22050.1050	
M 6	3,5	10	14,0	9,0	-	1,0	1,0	19,3	26,6	250	3,8	22050.1060	
M 8	4,5	13	16,5	11,0	-	1,2	1,5	36,0	60,5	250	7,5	22050.1080	
M10	6,0	16	20,0	14,0	-	1,5	2,0	57,0	103,5	250	13,0	22050.1100	
M12	8,0	18	22,0	15,0	-	2,0	2,5	61,0	110,0	250	19,0	22050.1120	
<b>不锈钢，标准弹簧荷重</b>													
M 4	2,5	6	9,5	6,5	5,0	0,6	0,8	8,0	14,0	250	1,0	22050.0940	
M 5	3,0	8	12,5	8,5	6,7	0,8	0,9	8,0	14,0	250	2,2	22050.0941	
M 6	3,5	10	14,0	9,0	-	1,0	1,0	11,0	18,0	250	3,8	22050.0942	
M 8	4,5	13	16,5	11,0	-	1,2	1,5	18,0	31,0	250	7,5	22050.0943	
M10	6,0	16	20,0	14,0	-	1,5	2,0	24,0	45,0	250	13,0	22050.0944	
M12	8,0	18	22,0	15,0	-	2,0	2,5	26,0	49,0	250	19,0	22050.0945	
<b>不锈钢，增加 弹簧荷重</b>													
M 4	2,5	6	9,5	6,5	5,0	0,6	0,8	12,0	18,0	250	1,0	22050.1240	
M 5	3,0	8	12,5	8,5	6,7	0,8	0,9	15,0	22,0	250	2,2	22050.1250	
M 6	3,5	10	14,0	9,0	-	1,0	1,0	19,3	26,6	250	3,8	22050.1260	
M 8	4,5	13	16,5	11,0	-	1,2	1,5	36,0	60,5	250	7,6	22050.1280	
M10	6,0	16	20,0	14,0	-	1,5	2,0	57,0	103,5	250	13,0	22050.1300	
M12	8,0	18	22,0	15,0	-	2,0	2,5	61,0	110,0	250	19,0	22050.1320	

<sup>1)</sup> 统计平均值

## 应用范例



## 遵守

For detailed compliance information please select the desired article number.