

定位柱 · 有螺栓和内六角

EH 22030.



产品描述

适用于定位、供压或顶举。

材质

螺絲形支撐座
 • 切削钢，硬化，染黑
 • 不锈钢 1.4305, 氮化

本体

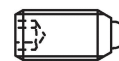
• 切削钢，染黑
 • 不锈钢 1.4305

弹簧

• 不锈钢

特性

标准弹簧荷重: 无标示
 强化弹簧荷重: 以两条线标示



Standard spring load



Heavy spring load

更多信息

注意事项

特殊的样式欢迎洽询。
 定位柱经过特别测试，以得知其弹簧的范围和作用。

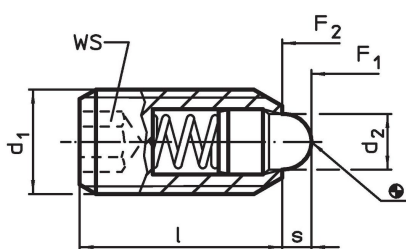
参考

需求的螺纹锁，请参阅附录 - 技术数据 -

更多产品

- 托座，用于定位柱
- 定位柱，有螺栓和内六角- 英寸

图面



订单信息

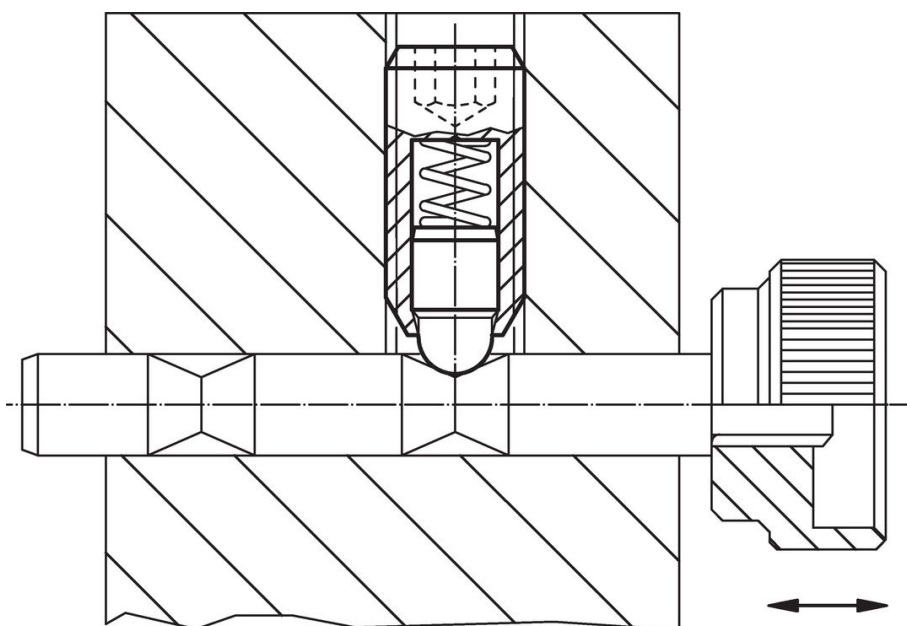
d ₁	尺寸		WS	行程 s	弹簧荷重 ¹⁾		max. [°C]	[g]	品号
	d ₂	l			F ₁ ~	F ₂ ~			
[mm]		[mm]	[mm]	[mm]	[N]	[N]			
切削钢，标准弹簧荷重									
M 4	1,8	12	2,0	1,5	4,5	12,5	250	0,6	22030.0104
M 5	2,4	14	2,5	2,0	5,0	13,0	250	1,2	22030.0105
M 6	2,7	15	3,0	2,0	6,0	17,0	250	1,8	22030.0106
M 8	3,8	18	4,0	2,0	16,0	33,0	250	4,1	22030.0108
M10	4,5	23	5,0	2,5	19,0	42,0	250	8,4	22030.0110
M12	6,2	26	6,0	3,5	22,0	57,0	250	13,0	22030.0112
M16	8,5	33	8,0	4,5	38,0	78,0	250	32,0	22030.0116
M20	10,0	43	10,0	6,5	39,0	81,0	250	68,0	22030.0120
M24	13,0	48	12,0	8,0	72,0	155,0	250	106,0	22030.0124
切削钢，增强 弹簧荷重									
M 6	2,7	15	3,0	2,0	11,0	25,0	250	1,9	22030.0146
M 8	3,8	18	4,0	2,0	23,0	59,0	250	4,1	22030.0148
M10	4,5	23	5,0	2,5	20,0	54,0	250	8,4	22030.0150
M12	6,2	26	6,0	3,5	38,0	96,0	250	13,0	22030.0152
M16	8,5	33	8,0	4,5	50,0	100,0	250	32,0	22030.0156
M20	10,0	43	10,0	6,5	52,0	133,0	250	68,0	22030.0160
M24	13,0	48	12,0	8,0	91,0	223,0	250	106,0	22030.0164

¹⁾ 统计平均值

d ₁	尺寸		WS [mm]	行程 s [mm]	弹簧荷重 ¹⁾		max. [°C]	[g]	品号
	d ₂ [mm]	l			F ₁ ~ [N]	F ₂ ~ [N]			
不锈钢, 标准弹簧荷重									
M 4	1,8	12	2,0	1,5	4,5	12,5	250	0,6	22030.0304
M 5	2,4	14	2,5	2,0	5,0	13,0	250	1,2	22030.0305
M 6	2,7	15	3,0	2,0	6,0	17,0	250	1,9	22030.0306
M 8	3,8	18	4,0	2,0	16,0	33,0	250	4,2	22030.0308
M10	4,5	23	5,0	2,5	19,0	42,0	250	8,4	22030.0310
M12	6,2	26	6,0	3,5	22,0	57,0	250	13,0	22030.0312
M16	8,5	33	8,0	4,5	38,0	78,0	250	32,0	22030.0316
M20	10,0	43	10,0	6,5	39,0	81,0	250	68,0	22030.0320
M24	13,0	48	12,0	8,0	72,0	155,0	250	104,0	22030.0324
不锈钢, 增加 弹簧荷重									
M 6	2,7	15	3,0	2,0	11,0	25,0	250	1,9	22030.0346
M 8	3,8	18	4,0	2,0	23,0	59,0	250	4,2	22030.0348
M10	4,5	23	5,0	2,5	20,0	54,0	250	8,4	22030.0350
M12	6,2	26	6,0	3,5	38,0	96,0	250	13,0	22030.0352
M16	8,5	33	8,0	4,5	50,0	100,0	250	32,0	22030.0356
M20	10,0	43	10,0	6,5	52,0	133,0	250	68,0	22030.0360
M24	13,0	48	12,0	8,0	91,0	223,0	250	108,0	22030.0364

¹⁾ 统计平均值

应用范例



遵守

For detailed compliance information please select the desired article number.