

U-Handles

EH 24310.



Product Description

U-handles are used, for example, on machine doors, furniture doors, cabinet doors, drawers and drawer units.

These rounded U-handles are characterised by their ergonomic and stable construction and their simple and timeless design.

Same design as version with bearing washer.

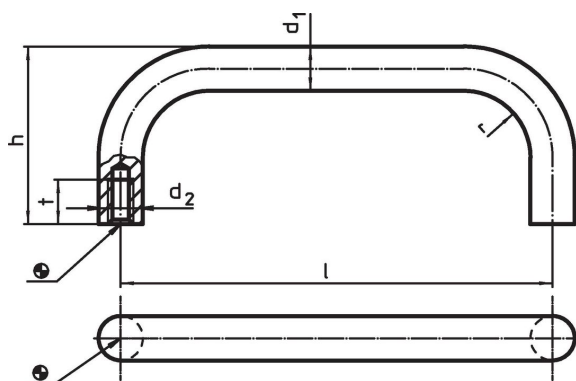
Thanks to the larger bearing surface, no bearing washers are needed.

Material

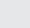
Handle

- Stainless steel 1.4301, dull blasted
- Steel, plastic coated, black

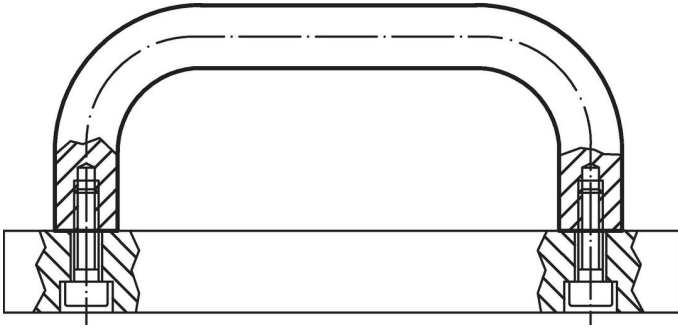
Drawing



Order information

Dimensions							Art. No.
d ₁	l ±0.5	d ₂	h	r	t min.		
[mm]							
Stainless steel							
12	125	M6	51	14	12	197	24310.0710
12	160	M6	51	14	12	201	24310.0720
12	200	M6	51	14	12	237	24310.0730
12	250	M6	51	14	12	282	24310.0740
16	160	M6	59	18	12	373	24310.0750
16	200	M6	59	18	12	437	24310.0760
16	250	M6	59	18	12	523	24310.0770
16	300	M6	59	18	12	603	24310.0780
Steel							
12	125	M6	51	14	12	197	24310.0910
12	160	M6	51	14	12	201	24310.0920
12	200	M6	51	14	12	237	24310.0930
12	250	M6	51	14	12	282	24310.0940
16	160	M6	59	18	12	373	24310.0950
16	200	M6	59	18	12	437	24310.0960
16	250	M6	59	18	12	523	24310.0970
16	300	M6	59	18	12	603	24310.0980

Application example



Compliance

RoHS compliant

Compliant according to Directive 2011/65/EU and Directive 2015/863.

Does not contain SVHC substances

No SVHC substances with more than 0.1% w/w contained - SVHC list [REACH] as of 23.01.2024.

Does not contain Proposition 65 substances

No Proposition 65 substances included.

<https://www.P65Warnings.ca.gov/>

Free from Conflict Minerals

This product does not contain any substances designated as "conflict minerals" such as tantalum, tin, gold or tungsten from the Democratic Republic of Congo or adjacent countries.